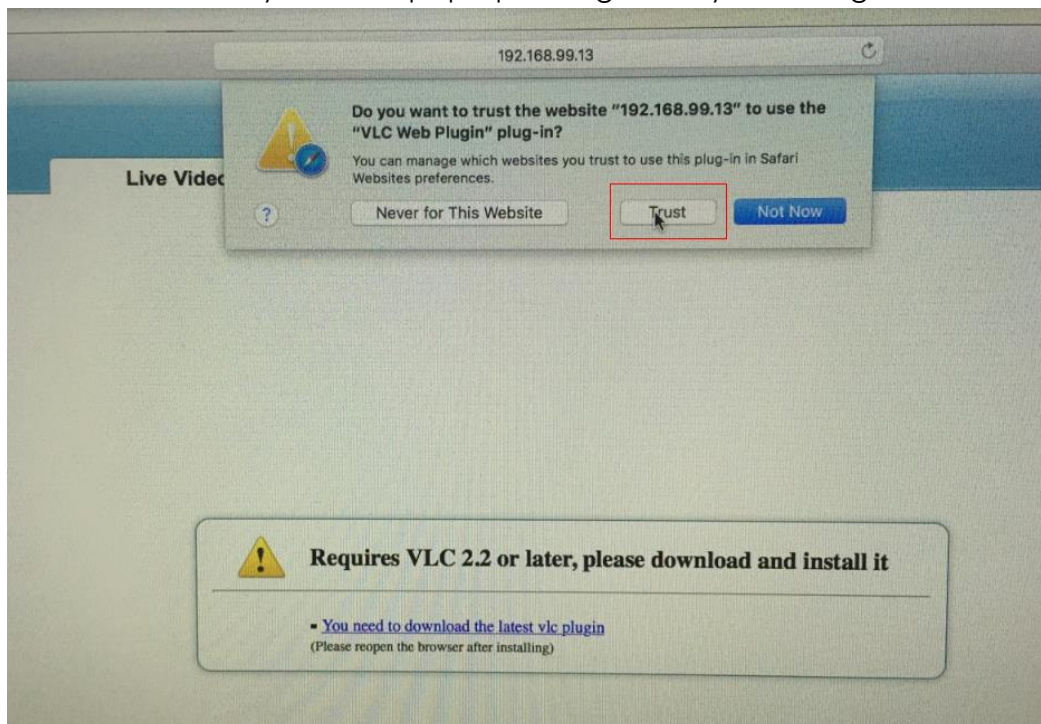


How to view the live video of my WBOX devices on MAC OS?

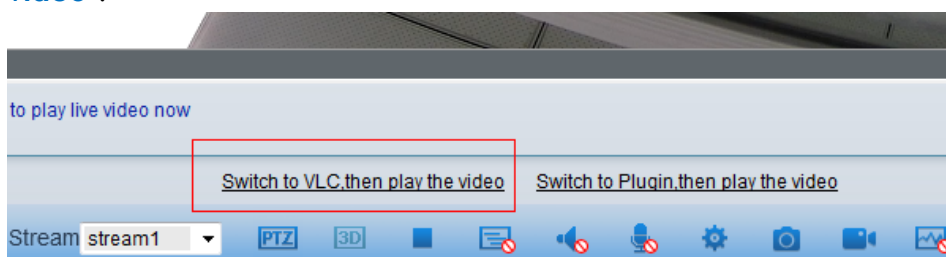
This article outlines the steps on how to view new WBOX products on MAC OS.

via Safari for IP Cameras only

1. Open Safari.
2. Input the camera's IP address on the address bar.
3. Click '**Trust**' when you see a pop-up dialog when you first log in.

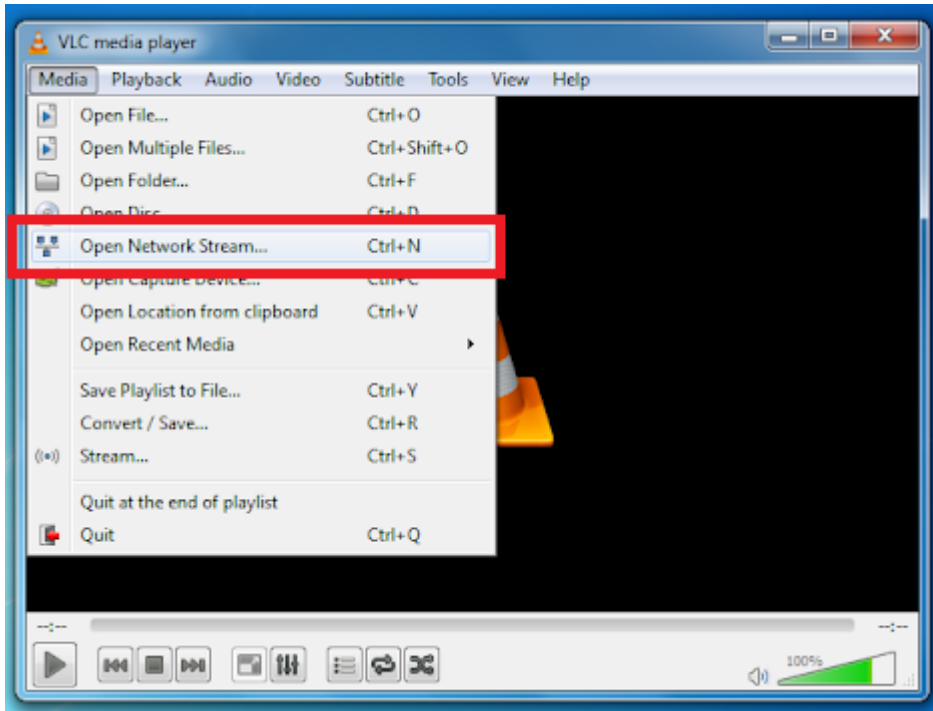


4. Re-open the Safari browser. If there is no live video, refresh the page and try again.
5. You will see two options at the bottom of the screen, choose '**Switch to VLC, then play the video**'.

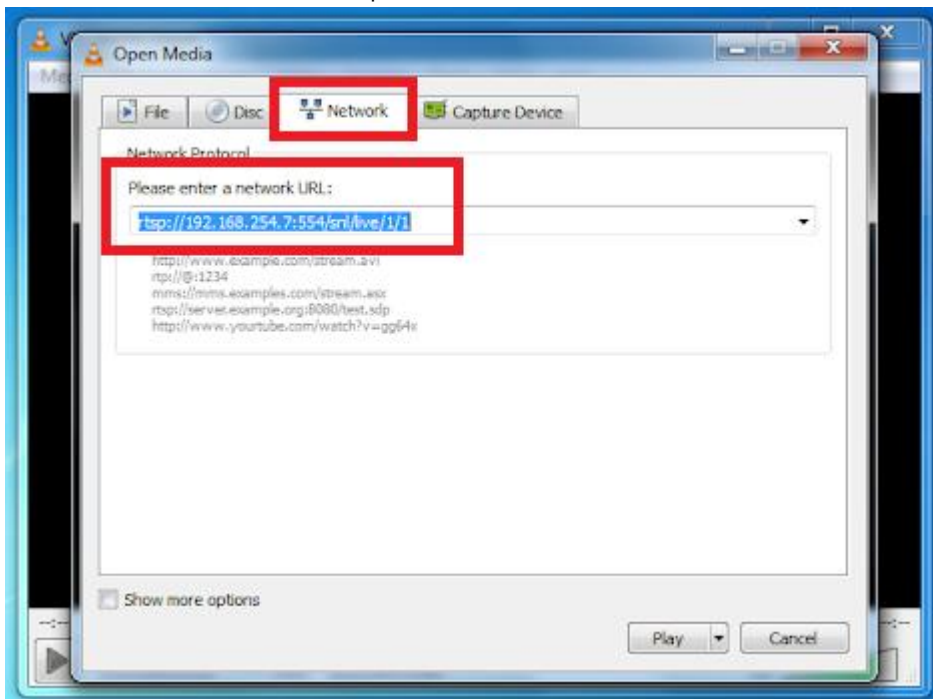


via VLC Video Player for IPC, DVR and NVR

1. Download a VLC video player from the App Store. Please note that the supported version is 2.2.6 or lower.
2. On VLC, click **Media > Open Network Stream** or **Ctrl+N**.



3. Go to **Network** tab and input the URL.



For IP Camera:

- **URL Format** – **rtsp://Device IP>:554/sn1/live/1/<Stream ID>**
- **Device IP:** replace with the actual IP address of the device. Example: 192.168.1.64
- **Stream ID:** replace with 1, 2 or 3.

For NVR:

- **URL Format** – **rtsp://<device IP>:554/sn1/live/<channel ID>/<stream ID>**
- **Device IP:** replace with the actual IP address of the device. Example: 192.0.0.64
- **Channel ID:** replace with the exact channel, for 4ch NVR, it can be 1, 2, 3 or 4.
- **Stream ID:** replace with 1, 2 or 3.

For DVR:

- **URL Format** – **rtsp://<device IP>:3036/<channel ID>/1**
- **Device IP:** replace with the actual IP address of the device. Example: 192.168.0.121
- **Channel ID:** replace with the exact channel, for 4ch DVR, it can be 1, 2, 3 or 4.

Note: **554** and **3036** are the default values of device. If you changed the port number 554 for IPC and NVR or 3036 for DVR, you should use the number you changed it to.

4. Enter the device's username and password if the dialog box below pops up.

