



Pro Control Technical Service Bulletin

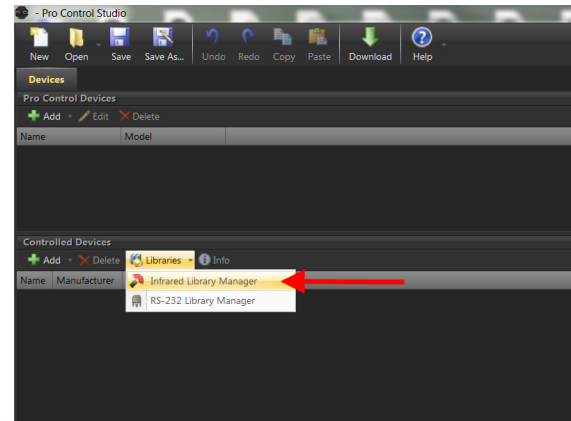
Importing Existing IR Databases into PCS

This step by step guide will instruct you how to import existing IR databases into Pro Control Studio for future use.

Pro Control Studio (PCS) uses a separate and static library for user created IR codes. While you can't edit commands listed in the master IR database within PCS, you may add any additional IR codes to the user library.

PCS uses a standalone IR manager for the user database. To access the IR Library Manager, select Libraries under Controlled Devices.

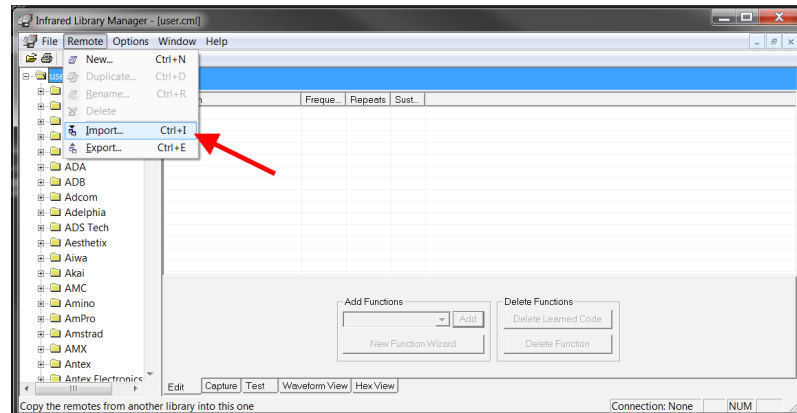
Open the Infrared Library Manager (IRLM).



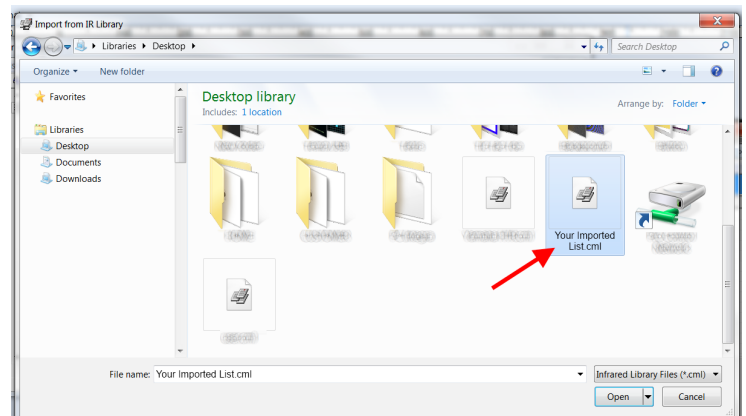
The IRLM will default to a user.cml file which is typically stored in the My Documents folder on your computer.

For PCS to see any of your custom IR codes, they will need to reside within this file.

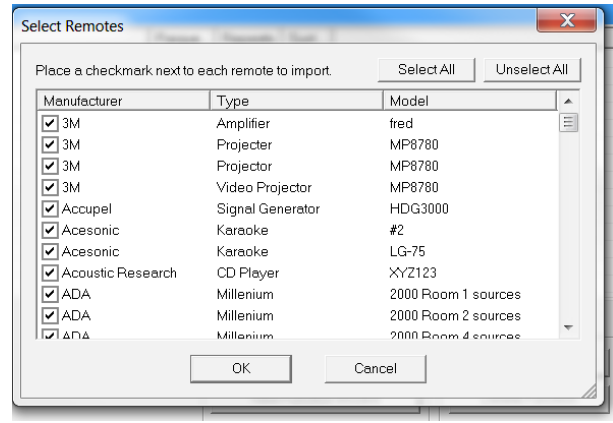
Select Remote from the top menu, then select Import.



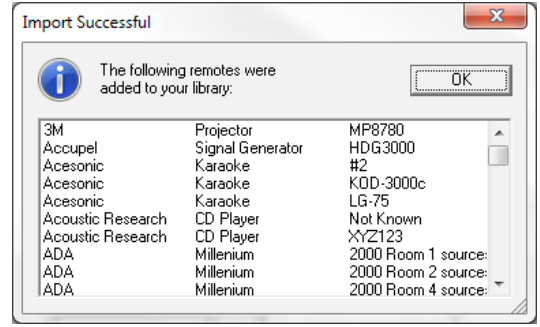
Navigate to the location on your computer where the target .cml file resides. Select it and click open.



Once opened, select the specific remotes you wish to import. Import all or just a few. Select OK when finished.



IRLM will confirm the importation process. When finished importing files, you will need to close the IRLM before proceeding in PCS. There is no need to save, this is done automatically.



Back in PCS, add an Infrared Device under Controlled Devices.

When the Select Device window opens, be sure to select User IR codes at the top of the screen to see your freshly imported code sets.

