
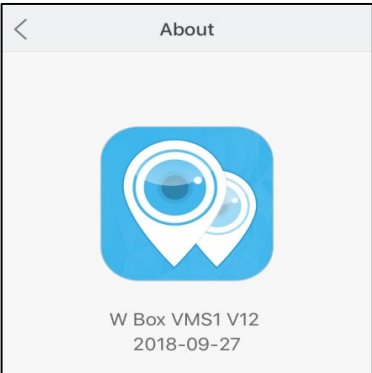




## How can I add an NVR to the WBOX VMS1 app on my Android or IOS phone via P2P (Scan QR Code)?

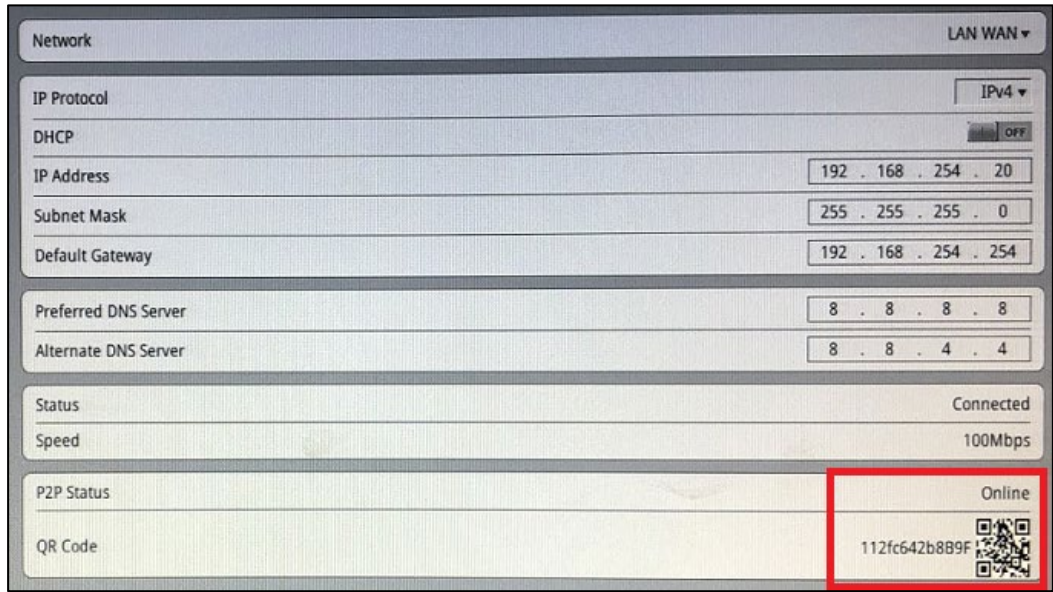
Product Models: **WBXNV04P41S1T, WBXNV04P41S, WBXNV08P82S2T, WBXNV08P82S, WBXNV16P164S4T and WBXNV16P164S**

### Preparation:

- Download and install the correct application which is **WBOX VMS1**.

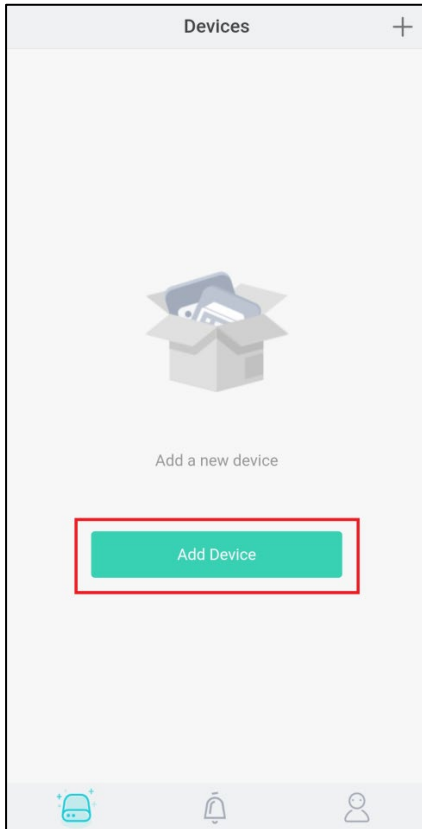
Phone OS	Android	IOS
Where to download	<b>Google Play</b> <a href="http://goo.gl/ppmCM4">http://goo.gl/ppmCM4</a>	<b>App Store</b> <a href="http://apple.co/2KYloEg">http://apple.co/2KYloEg</a>
Required Phone OS Version	<b>Android 5.0 or later</b>	<b>IOS 8.0 or later</b>
Current App Version	<b>V3.4.0 2018-09-26</b> 	<b>V12 2018-09-27</b> 


- Please ensure that the device is connected to a network and the status is '**Online**'. You can find this information under  > **Setting > Device > Network**.
  - Make sure that the device is connected to a router with Internet access.
  - Change the network settings on the device interface. You can find the network settings in  > **Setting > Device > Network**.
    - The gateway should be the router's local IP address or gateway.
    - The device IP address should stay in the IP address range of the router's gateway.
    - Subnet mask should be the one indicated on the router settings or 255.255.255.0.
    - DNS server can be your router's DNS server or you can use 8.8.8.8 and 8.8.4.4.

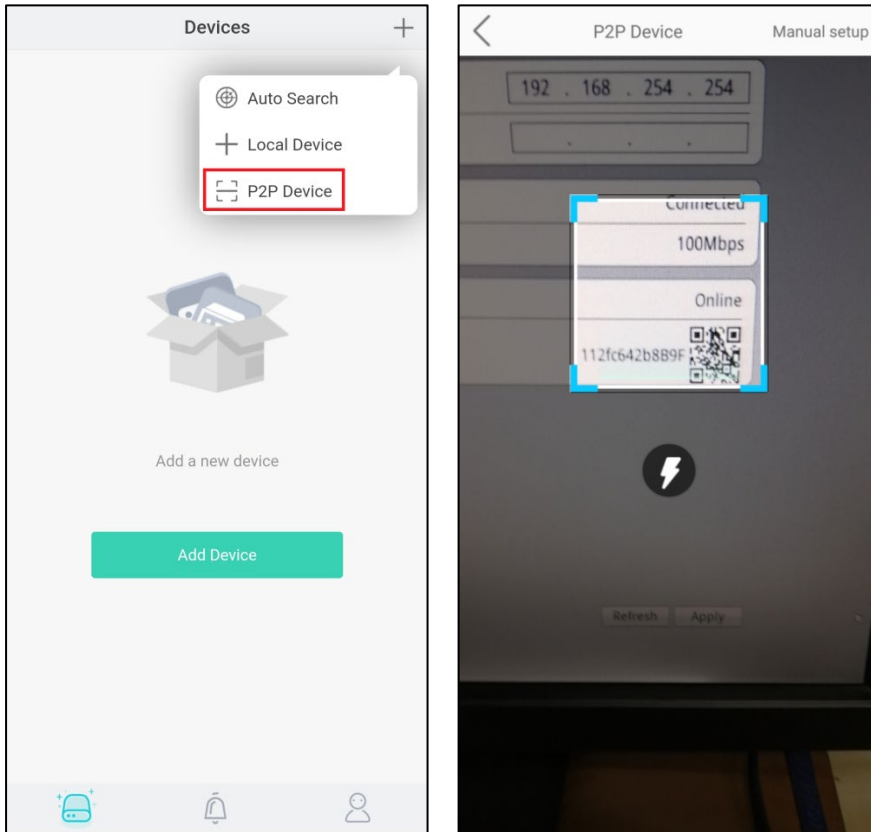


**Procedures:**

1. Open the WBOX VMS1 application on your phone, and then click '**Add Device**'.



2. Tap '**P2P Device**' and scan the QR code of the P2P that is indicated on the NVR interface. The QR code is located in  > **Setting** > **Device** > **Network**.



3. Input the needed information.

- a. Enter a **Nickname**.
- b. In the **Port** field, input the **Control Port** indicated in your device settings. This information can be found in  > Setting > Device > Device Port.

**Please note:** The default value of the Control Port is **30001**. If you changed it to a different number, please make sure to input the new port number in the app.

- c. Enter the **Username** and **Password** of the device.
- d. Hit **Save** at the upper right corner.

