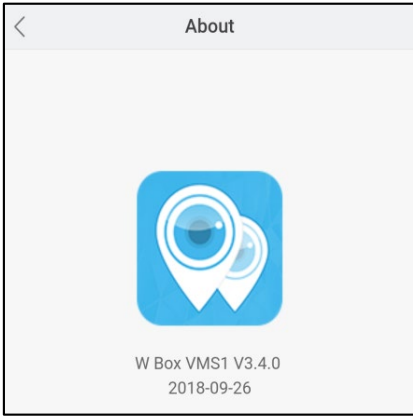
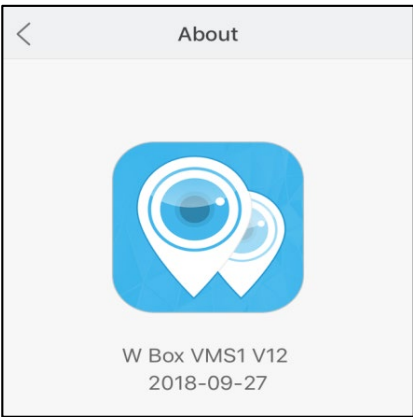



How can I add an NVR to the WBOX VMS1 app on my Android or IOS phone via IP Address or DDNS?

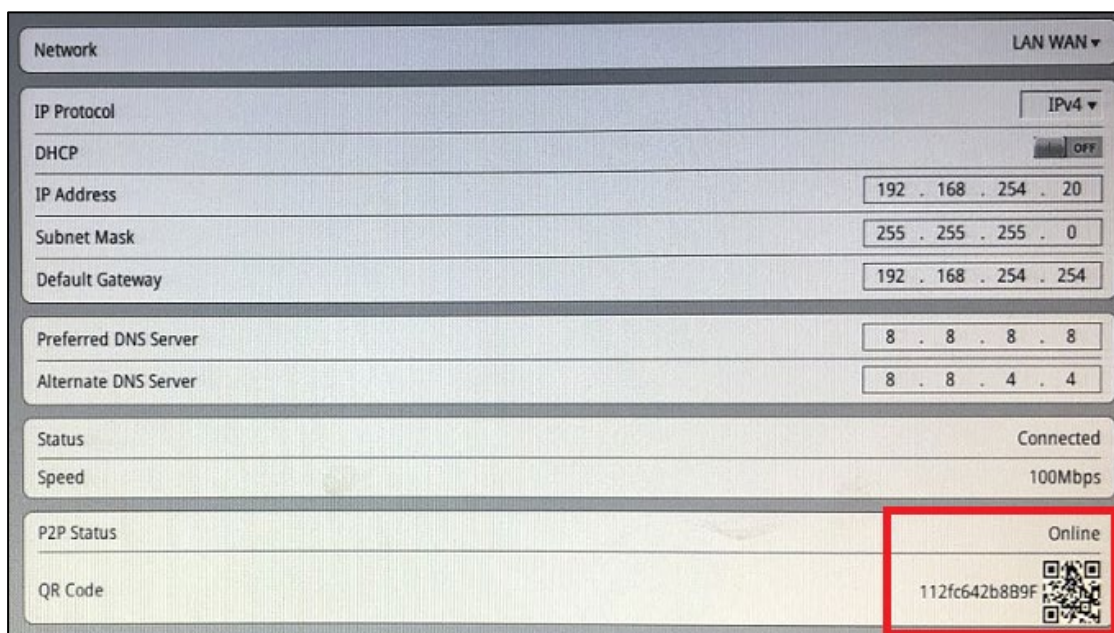
Product Models: **WBXNV04P41S1T, WBXNV04P41S, WBXNV08P82S2T, WBXNV08P82S, WBXNV16P164S4T and WBXNV16P164S**

Preparation:


- Download and install the correct application which is **WBOX VMS1**.

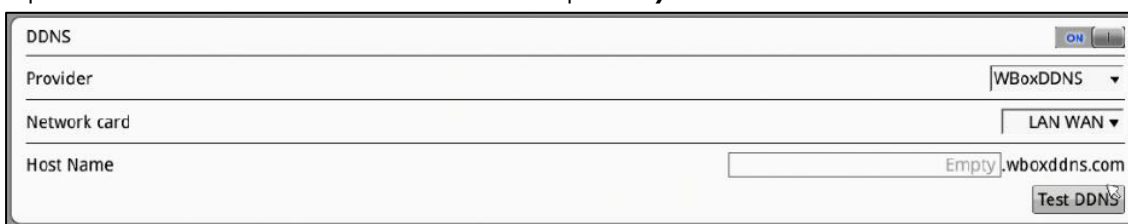
Phone OS	Android	IOS
Where to download	Google Play http://goo.gl/ppmCM4	App Store http://apple.co/2KYloEg
Required Phone OS Version	Android 5.0 or later V3.4.0 2018-09-26	IOS 8.0 or later V12 2018-09-27
Current App Version		

- Please ensure that the device is properly connected to a network with Internet access.
 - Change the network settings on the device interface. You can find the network settings in  > **Setting** > **Device** > **Network**.
 - The device IP address should stay in the IP address range of the router's gateway.
 - Subnet Mask should be the one indicated on the router settings or 255.255.255.0.
 - The Default Gateway should be the router's local IP address or gateway.
 - DNS servers can be your router's DNS servers or you can use 8.8.8.8 and 8.8.4.4.




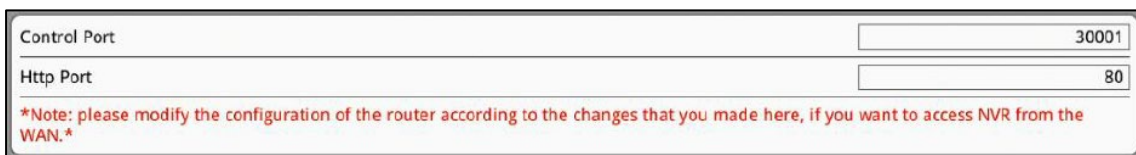
3. If you will be using **DDNS** in adding the device to the WBOX VMS1 app, please enable the DDNS first.

- [1] Go to  > **Settings** > **Network Service** > **DDNS**. Turn on DDNS.
- [2] Under **Provider** choose '**WBoxDDNS**'. (This is a free DDNS service.)
- [3] Under **Network card** choose '**LAN WAN**'.
- [4] Input a **Host Name** inside the box. Example: **mydvr.wboxddns.com**.



4. If you would like to access the device remotely via WAN (external/public) IP or DDNS address using your phone, you have to open/forward the port number indicated in **Control Port**. The default value is 30001.

- The Control Port can be found in  > Setting > Device > Device Port
- If you changed this to a different number, please open/forward the new port number.

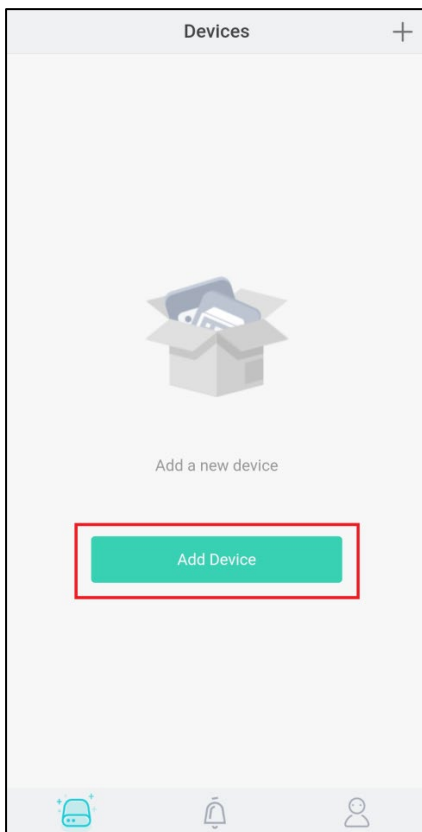


- [1] Log in to the router where the device is connected to.
- [2] Setup port forwarding using the device IP address and Control Port. You may go to this website to find some general guidelines on how to perform port forwarding depending on your router's brand/manufacturer – www.portforward.com.
- [3] Verify if the Control Port is open or not. You can go www.yougetsignal.com/tools/open-ports/.

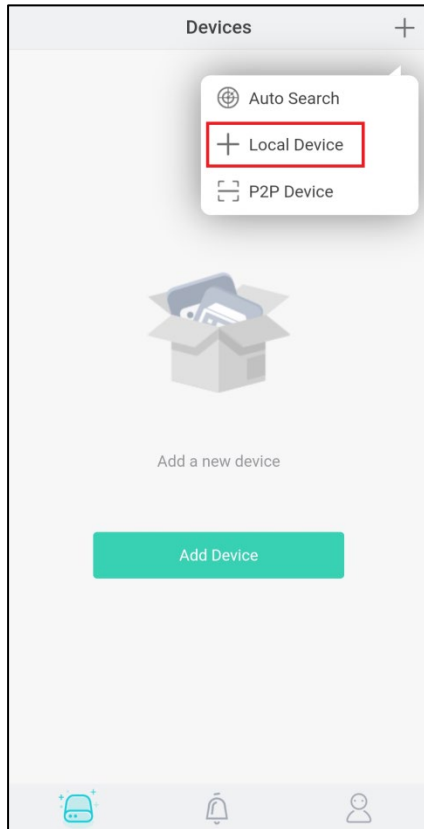
- [4] Once the port is open, you can now proceed in adding the device to the WBOX VMS 1 app on your phone.


Procedures:

1. Open the WBOX VMS1 application on your phone, and then click '**Add Device**'.



2. Tap '**+ Local Device**'.



3. Input the needed information.
 - a. Enter a **Nickname**.
 - b. In the **IP Address** field, enter the local IP address, WAN (external/public) IP address or DDNS address.
 - c. In the **Port** field, input the **Control Port** indicated in the device settings. This information can be found in  > Setting > Device > Device Port.

Please note:

 - The default value for Control Port is 30001. If you changed it to a different number, please ensure to use the new port number.
 - If you will only access the device using the WBOX VMS1 app on local/home network only, there is no need to port forward Control Port.
 - If you will be accessing the device remotely via WAN (external/public) IP or DDNS address using the WBOX VMS1 app, you need to port forward Control Port.
 - d. Enter the **Username** and **Password** of the device.
 - e. Hit **Save** at the upper right corner.

