

How can I add a DVR V4.2 or NVR V4.2 to the WBOX VMS1 app on my Android or IOS phone via P2P (Scan QR Code)?


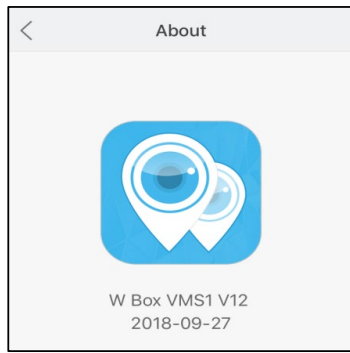
Product Models:

Hybrid DVR	NVR
WBXHD041S1T/WBXHD041S	WBXNV04P41S1T/ WBXNV04P41S
WBXHD082S2T/WBXHD082S	WBXNV08P82S2T/WBXNV08P82S
WBXHD162S4T/WBXHD162S	WBXNV16P164S4T/WBXNV16P164S

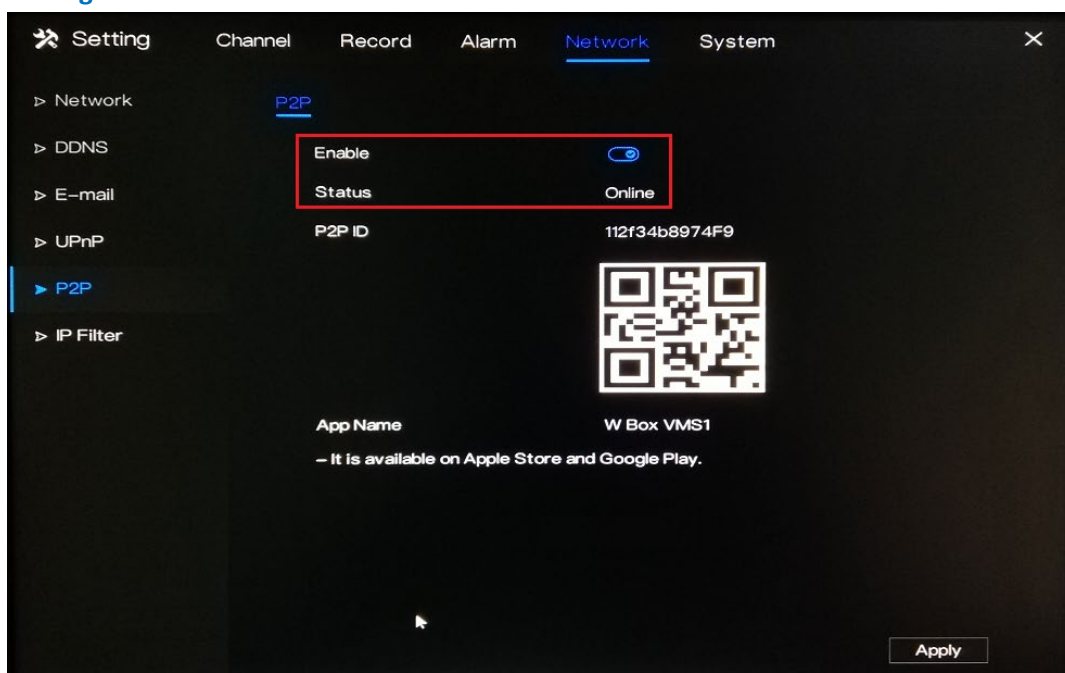
Firmware Version: V4.2.XXXX.0000.166.X.XX.X.X

Preparation:

- Download and install the correct application which is the [WBOX VMS1](#).

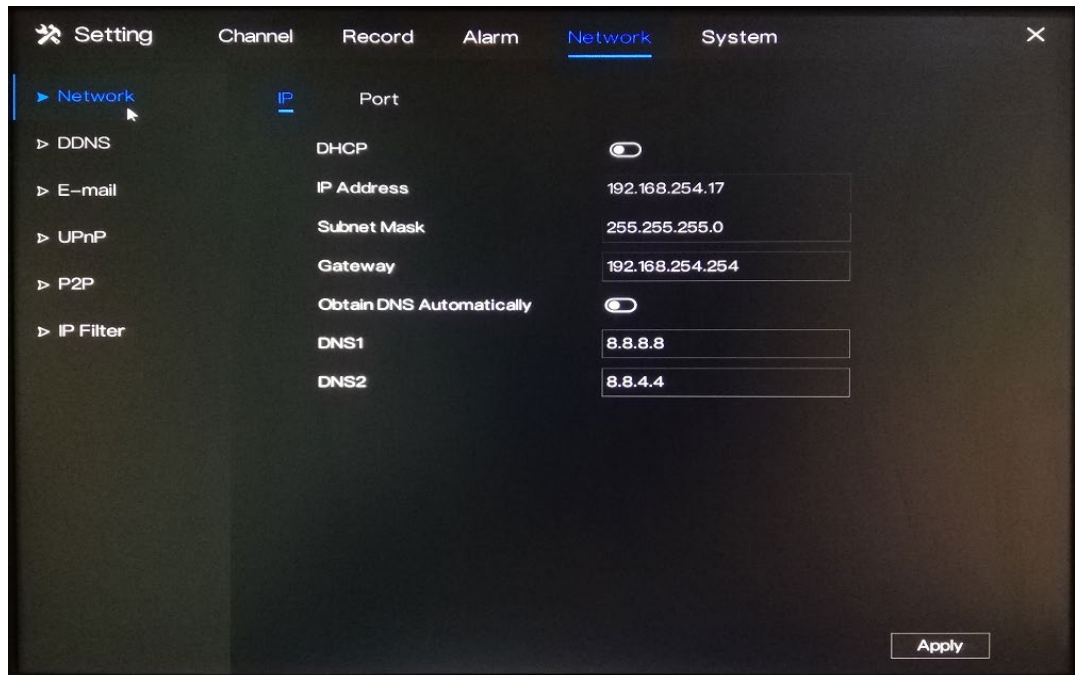
Phone OS	Android	IOS
Where to download	Google Play http://goo.gl/ppmCM4	App Store http://apple.co/2KYIoEg
Required Phone OS Version	Android 5.0 or later	IOS 8.0 or later
Current App Version	V3.4.0 2018-09-26 	V12 2018-09-27 

- Ensure that the device is connected to a network and the status is 'Online'. You can find this information in [Setting > Network > P2P](#).



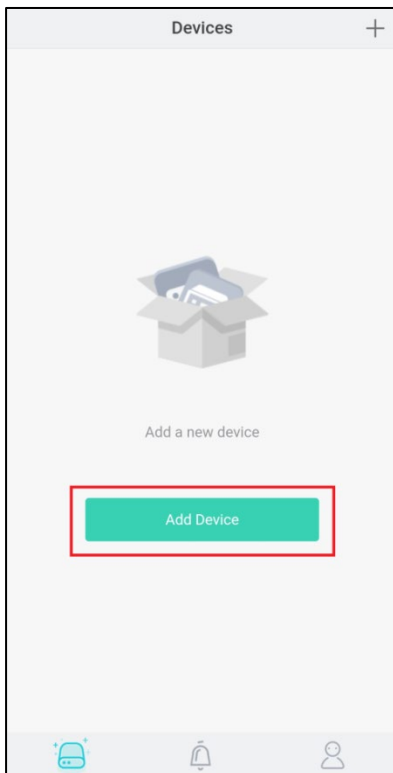
To ensure that the device is connected to the network properly, please follow the steps below.

- [1] Check if the device is connected to a router with Internet access.
- [2] Check if the device's network setting is set up properly. You can find this in **Setting > Network > Network > IP**.
 - a) The device's **IP Address** should be in the same range as the router's gateway.
 - b) **Subnet Mask** should be same as what is indicated in the router's network setting.
 - c) The **Gateway** should be the router's gateway or local IP address.
 - d) **DNS 1** and **DNS 2** can be your router's DNS servers or you can use **8.8.8.8** and **8.8.4.4**.

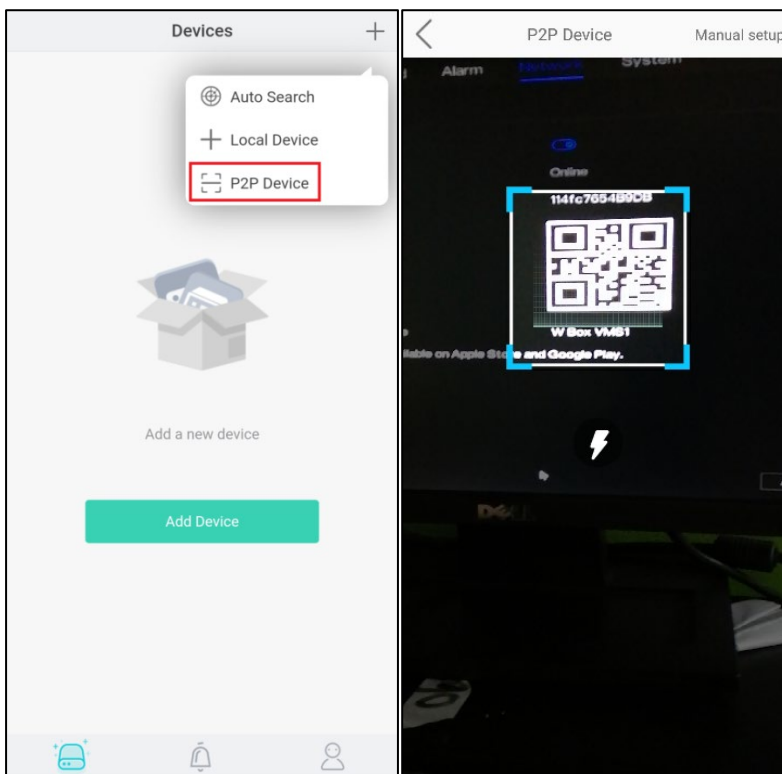


Procedure:

1. Open the WBOX VMS 1 app on your mobile phone.
2. Click **Add Device**.



3. Tap **P2P Device** and then scan the QR code that is shown on your device's interface. The QR code is located in **Setting > Network > P2P**.



4. Input the needed information on the app.
 - a. Enter a **Nickname**.
 - b. In the **Port** field, input the **Client Port** indicated in the device setting. This information can be found in **Setting > Network > Network > Port**.

Please note: The default value of the **Client Port** is **30001**. If you changed it to a different number, please make sure to input the new port number in the app.
 - c. Enter the **Username** and **Password** of the device.
 - d. Hit **Save** at the upper right corner to save the information.

