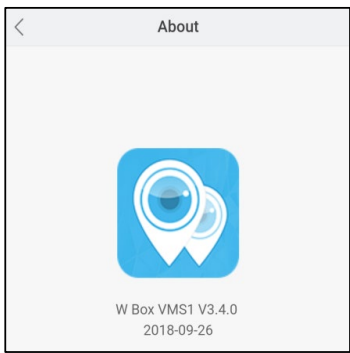
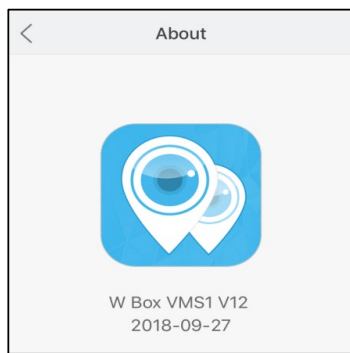


## How can I add a Hybrid DVR to the WBOX VMS1 app on my Android or IOS phone via P2P (Scan QR Code)?

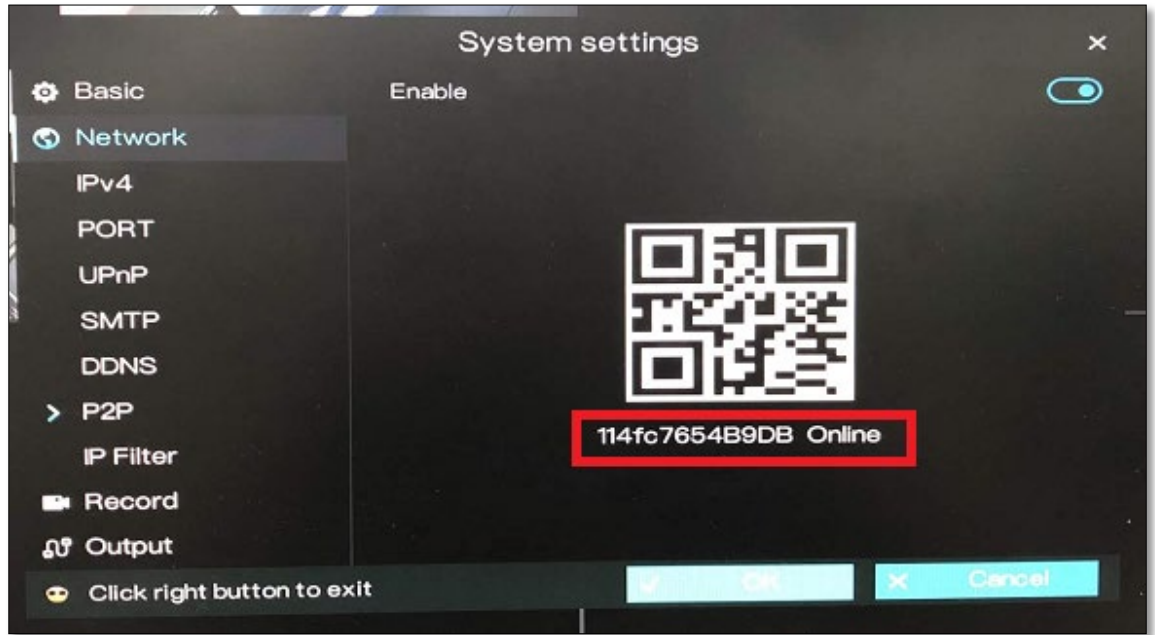
Product Models: **WBXHD041S1T, WBXHD041S, WBXHD082S2T, WBXHD082S, WBXHD162S4T and WBXHD162S.**

### Preparation:

- Download and install the correct application which is **WBOX VMS1**.

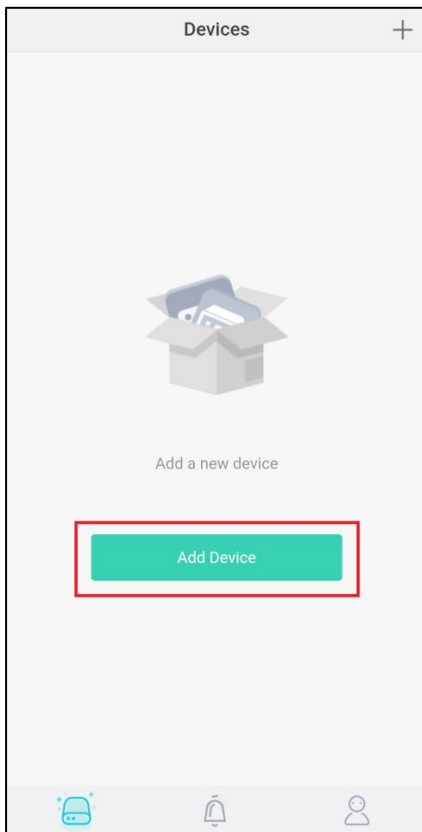
Phone OS	Android	IOS
Where to download	<b>Google Play</b> <a href="http://goo.gl/ppmCM4">http://goo.gl/ppmCM4</a>	<b>App Store</b> <a href="http://apple.co/2KYloEg">http://apple.co/2KYloEg</a>
Required Phone OS Version	<b>Android 5.0 or later</b> <b>V3.4.0 2018-09-26</b>	<b>IOS 8.0 or later</b> <b>V12 2018-09-27</b>
Current App Version		

- Please ensure that the device is connected to a network and the status is '**Online**'. You can find this information under **System settings > Network > P2P > Enable**.
  - Make sure that the device is connected to a router with Internet access.
  - Change the network settings on the device interface. You can find the network settings in **System settings > Network > IPv4**.
    - The device IP address should stay in the IP address range of the router's gateway.
    - Net mask should be the one indicated on the router settings or 255.255.255.0.
    - The gateway should be the router's local IP address or gateway.
    - DNS server can be your router's DNS server or you can use 8.8.8.8 and 8.8.4.4.

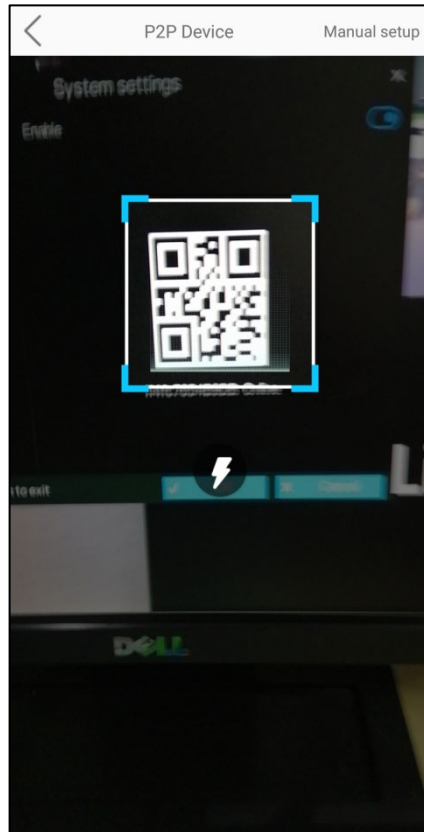
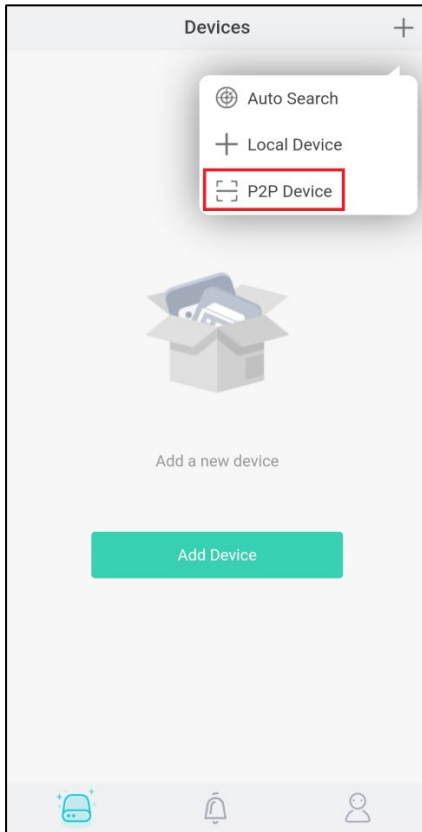


**Procedures:**

1. Open the WBOX VMS1 application on your Android phone, and then click '**Add Device**'.



2. Tap '**P2P Device**' and scan the QR code of the P2P that is indicated on the DVR interface. The QR code is located in **System settings > Network > P2P**.



3. Input the needed information.
  - a. Enter a **Nickname**.
  - b. In the **Port** field, input the **Data port2** indicated in the device settings. This information can be found in System settings > Network > Port.  
**Please note:** The default value of the Data port2 is **30001**. If you changed it to a different number, please make sure to input the new port number in the app.
  - c. Enter the **Username** and **Password** of the device.
  - d. Hit **Save** at the upper right corner.

