



## How to update the firmware of the WBOX Hybrid DVR?

This article outlines the steps in updating the WBOX HD Hybrid DVRs in two methods:

1. Upgrade via USB Flash Drive
2. Upgrade via Web Browser

Product Models: **WBXHD041S1T, WBXHD041S, WBXHD082S2T, WBXHD082S, WBXHD162S4T and WBXHD162S**

**Where to get the firmware files?** –<https://www.wboxtech.com/en/firmware/>

### Update via USB Flash Drive

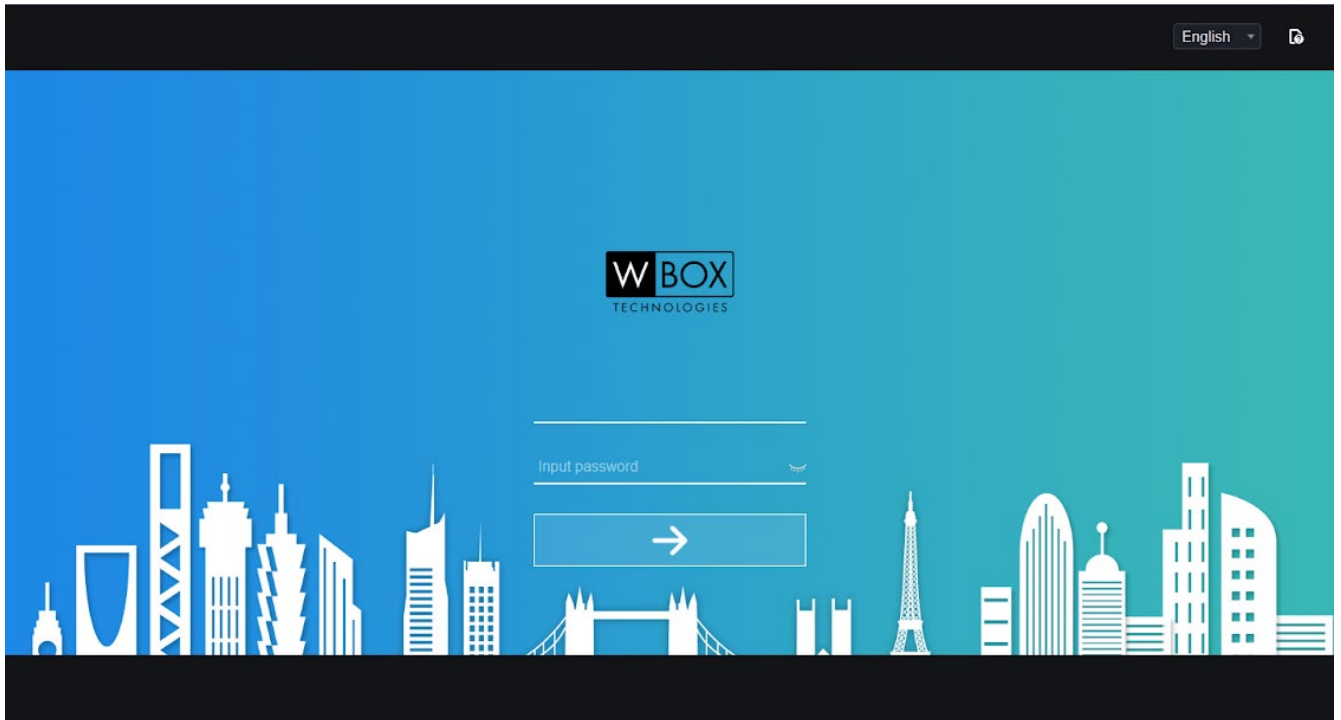
1. Download the firmware file on your PC/laptop. Copy the file to a USB flash drive.
2. Turn off the DVR.
3. Insert the USB flash drive into the USB port of the DVR.
4. Turn on the DVR. Once the DVR is turned on, the update process will automatically reboot
5. Wait for the process to be completed.

Note: Please unplug all the other USB device (eg. mouse) while update by flash drive.

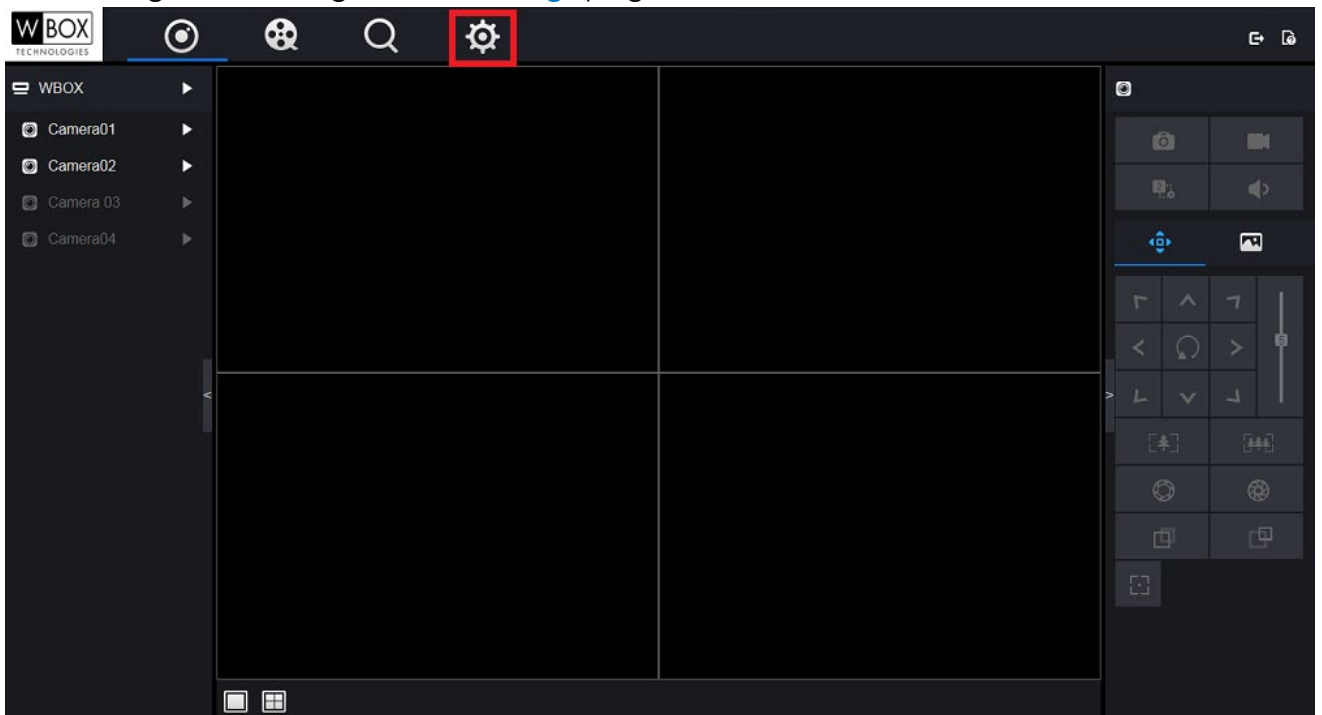
### Update via Web Browser

1. Download the firmware upgrade file on your PC/laptop.
2. Connect the DVR to your router. Make sure that the PC/laptop is also connected on the same router. The IP address of the DVR and the PC/laptop should be in the same range.
3. If you know the IP address of the DVR, open it using a web browser. If you don't know the IP address of the DVR, download the WBOX IP Search Tool first ([On Wbox website](#)). Once you have the search tool, double-click the DVR to open your default web browser.

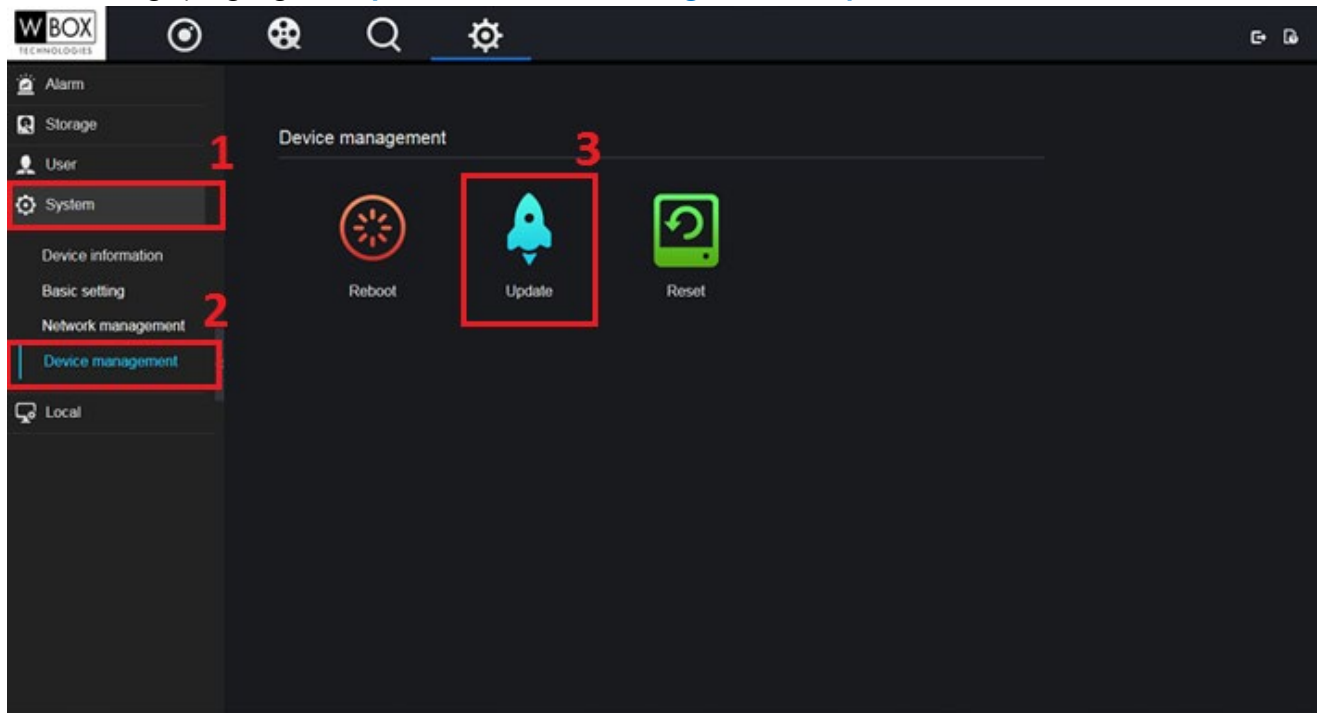
4. On the login page, enter the username and password of your device.



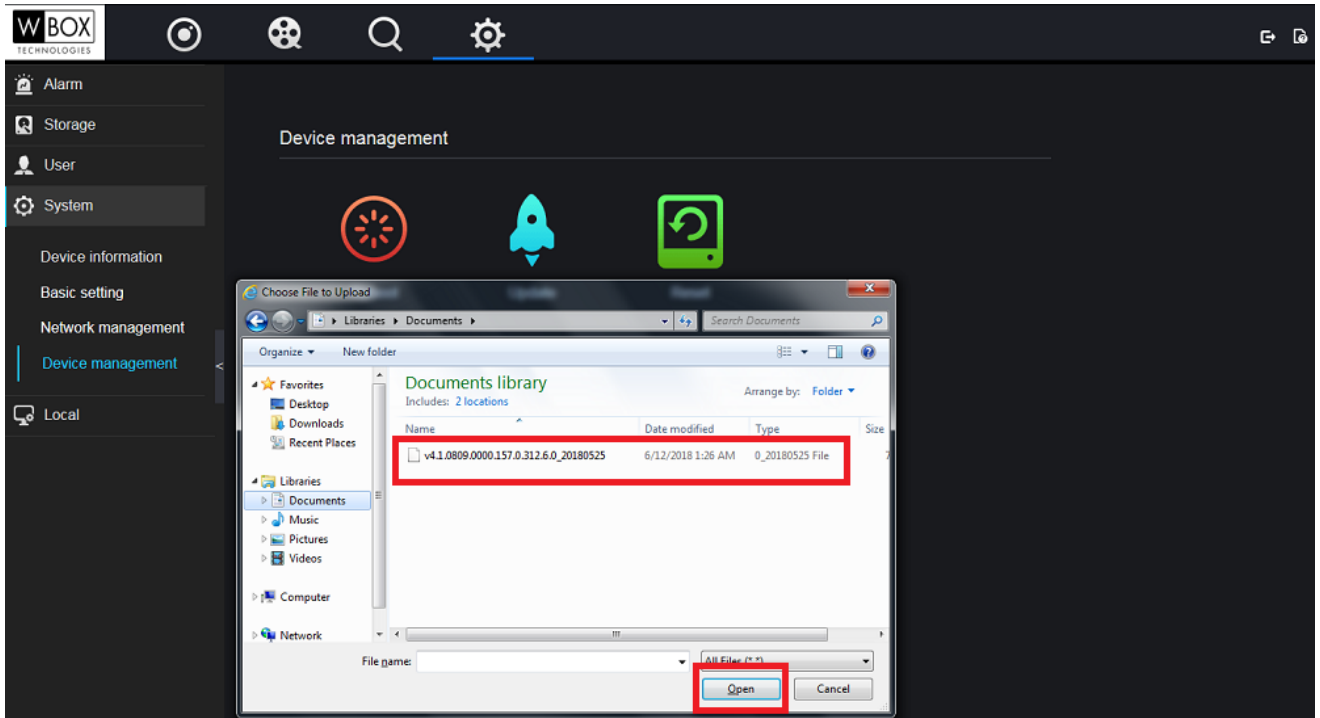
5. Click the gear icon to go to the **Settings** page.



6. On Settings page go to **System > Device management > Update**.



7. Choose the correct firmware upgrade file and click open.



8. Wait for several minutes for the upgrade to finish. The device will reboot automatically after the update.

