

## How to update the firmware of the NVR V4.2?

**Product Models:** WBXNV04P41S1T, WBXNV04P41S, WBXNV08P82S2T, WBXNV08P82S, WBXNV16P164S4T and WBXNV16P164S

**Firmware Version:** V4.2.XXXX.0000.166.X.XX.X.X

This article outlines the steps in updating the WBOX NVR (V4.2 or new user interface) in two methods:

1. Update via USB Flash Drive
2. Update via Web Browser

**Where to get the firmware files?** –<https://www.wboxtech.com/en/firmware/>

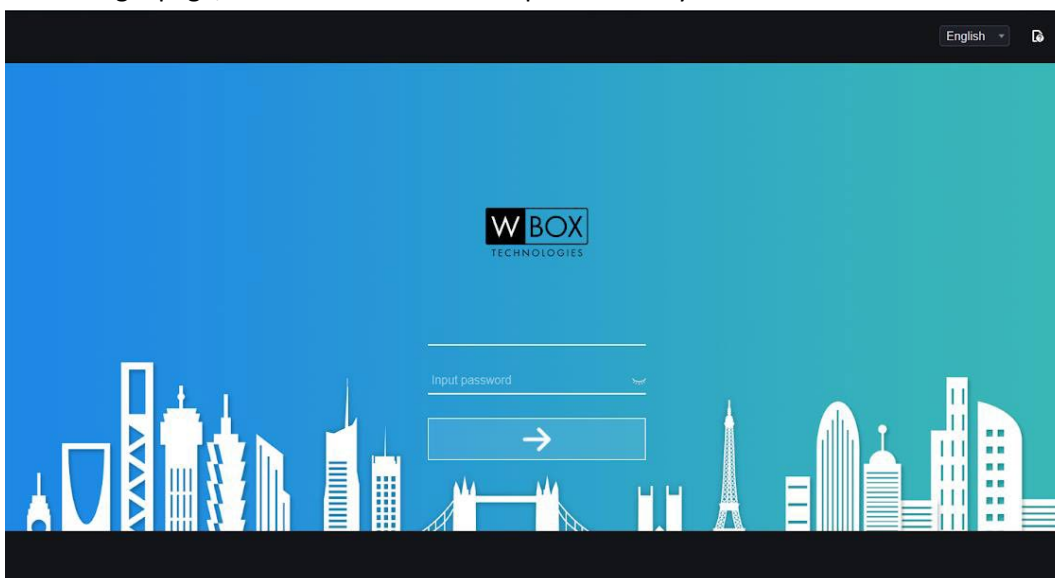
### Procedure:

#### Update via USB Flash Drive

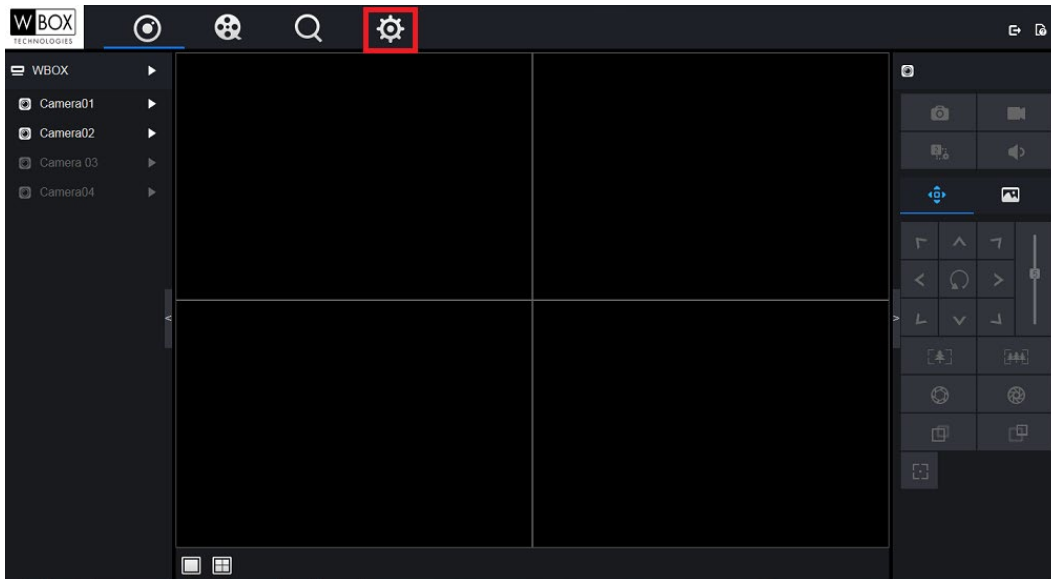
1. Download the firmware file on your PC/laptop. Copy the file to a USB flash drive.
2. Turn off the device.
3. Insert the USB flash drive into the USB port of the device.
4. Press and hold the reset button, then power on the device (without releasing the reset button).
5. Hold the reset button until you see a white screen on the monitor.
6. Once the device is turned on, the update proceed and the device will automatically reboot.
7. Wait for the process to be completed.

#### Update via Web Browser

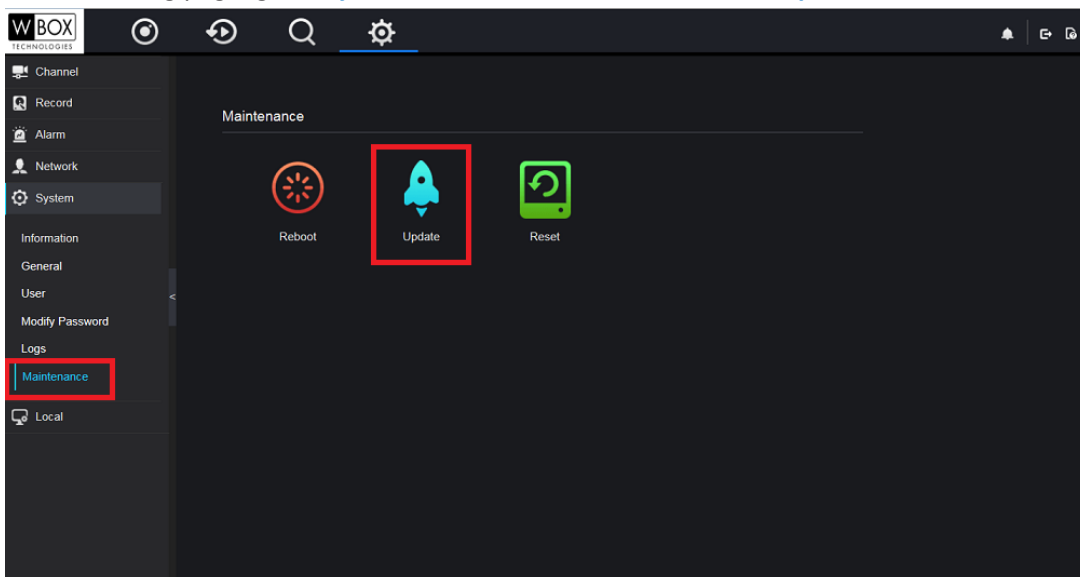
1. Download the firmware file on your PC/laptop.
2. Connect the device to your router. Make sure that the PC/laptop is also connected on the same router. The IP address of the device and the PC/laptop should be in the same range.
3. If you know the IP address of the device, open it using Internet Explorer. If you don't know the IP address of the device, download the WBOX IP Search Tool first(On Wbox website). Once you have the search tool, double-click the NVR to open your default web browser.
4. On the login page, enter the username and password of your device.



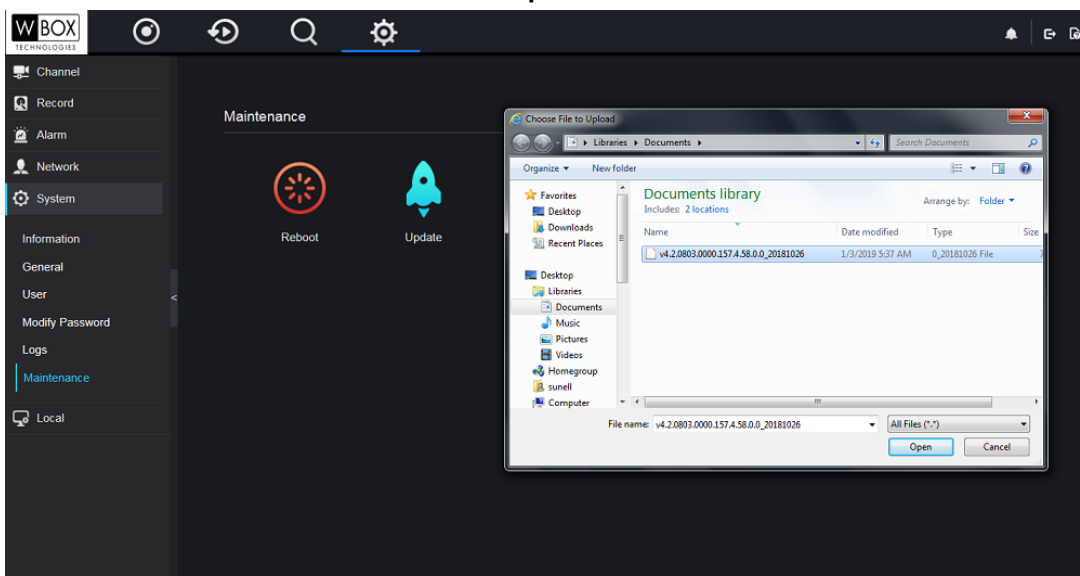
5. Click the gear icon to go to the **Setting** page.



6. On the Setting page, go to **System > Maintenance** and then click **Update**.



7. Choose the correct firmware file and click **Open**.



8. Wait for several minutes for the update to complete. The device will reboot automatically after the update.

